

SAMP: Architecture, JSAMP and sampjs

Mark Taylor (University of Bristol)

BoF: Interoperability with SAMP
ADASS XXII
Champaign IL
7 November 2012

`$Id: mbtsamp.tex,v 1.19 2012/11/10 22:49:03 mbt Exp $`

Outline

- SAMP overview and architecture
- **JSAMP**: Java toolkit for SAMP
 - Diagnostic tools
 - Library for adding SAMP to Java applications
- **sampjs**: JavaScript library for SAMP
 - Library for adding SAMP to web pages

Background and History

SAMP = Simple Applications Messaging Protocol

allows astronomy software tools to exchange control and data

History:

- PLASTIC v1 (Platform for Astronomical InterConnection), Euro-VO protocol 2006
- SAMP v1.11, IVOA Recommendation 2009
- Useful client-side technology for VO work patterns
- . . . but not specific to VO applications

Status:

- Quite widely used in desktop tools
 - ▷ SAOImage ds9, Aladin, TOPCAT, SPLAT, WWT, VOSpec, IRAF, HIPE, Astro-WISE, Aspro2, JSky, SkyCat/Gaia, VirGO, . . .
 - ▷ Java, Python, Perl, C, C#, Tcl, IDL, . . .
- Visible at ADASS
 - ADASS XIX: 5 subject index entries for “SAMP”
 - ADASS XX: 16 subject index entries for “SAMP” (*5th after Java, Python, VO & XML*)
 - ADASS XXI: 7 subject index entries for “SAMP”

Design for Interoperability

Principles to maximise interoperability:

- Simple to use and learn for *client developers* and users
 - ▷ Platform independent
 - ▷ Lightweight to implement
- Message semantics are typically vague
 - ▷ *“Here’s a table!”* not *“Plot entries from this catalogue over the current image”*
 - ▷ but also extensible
 - ▷ Arise from usage, not decreed by committee

Consequences:

- Loosely coupled suites of interoperating tools
 - ▷ ... selected by the user
 - ... without conscious effort
 - ▷ ... from a pool of tools contributed by developers
 - ... who do not need close collaboration
- It works!

Key Concepts

- Hub-based operation

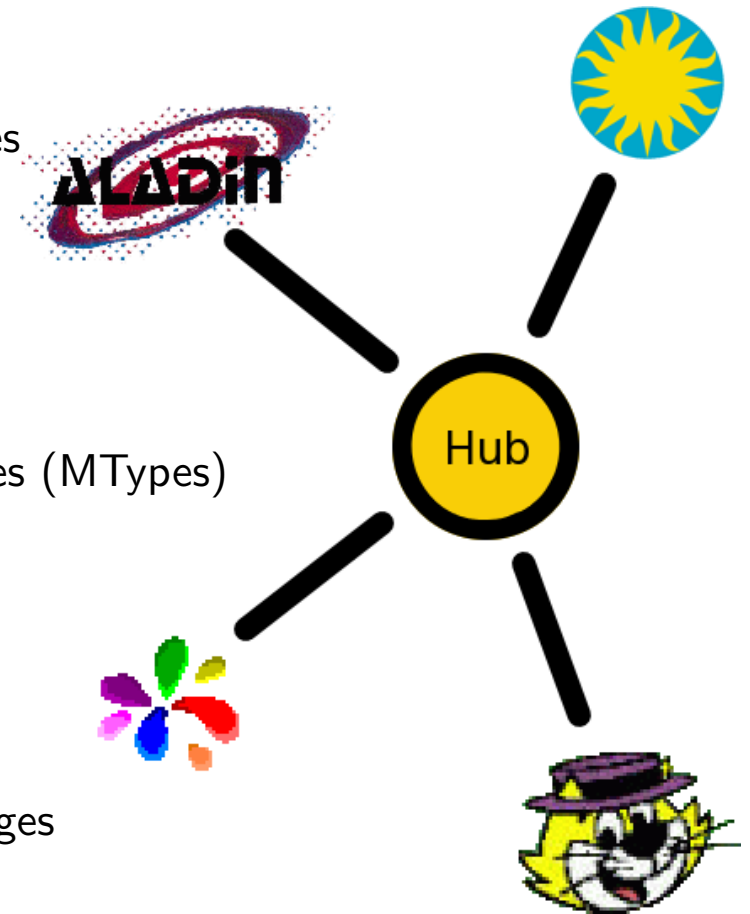
- *Hub* is a daemon process, conceptually freestanding (though may run within one client)
- Clients *register* with Hub to send/receive messages
- Hub brokers messages and provides directory services
- All communication is Client ↔ Hub (but messaging conceptually Client ↔ Client)

- Publish/Subscribe

- Each client *subscribes* to zero or more message types (MTypes)
- Clients can only receive subscribed messages

- Callable Clients

- All clients can *send* messages
- Only *callable* clients can subscribe to/receive messages
- Callability is optional



3-Layer Architecture

Abstract API

Data types
Message structure
Control functions

Profile

Transport protocol
Data encoding
Hub discovery

Standard Profile

Web Profile

MTypes

Message semantics
Arguments
Return values

image.load.fits

table.highlight.row

coords.sky.pointAt

...

Layer 1: Abstract API

Hub API:

```
register()
unregister()

declareMetadata(map metadata)
declareSubscriptions(map subscriptions)

getRegisteredClients()
getSubscribedClients(string mtype)
getMetadata(string client-id)
getSubscriptions(string client-id)

notify(string recipient-id, map message)
notifyAll(map message)
call(string recipient-id, string msg-tag, map message)
callAll(string msg-tag, map message)
callAndWait(string recipient-id, map message, string timeout)
reply(string msg-id, map response)
```

Callable Client API (*optional*):

```
receiveNotification(string sender-id, map message)
receiveCall(string sender-id, string msg-id, map message)
receiveResponse(string responder-id, string msg-tag, map response)
```

Layer 2: Profile

The *Profile* maps the abstract API to bits on the wire (or similar)

- Two profiles currently defined:
 - ▷ Standard Profile:
 - Suitable for **desktop applications**
 - Based on XML-RPC
 - Hub discovered using local lockfile `~/.samp` (usually)
 - Callable clients run their own XML-RPC server to receive messages
 - ▷ Web Profile (*since April 2012 only*):
 - Suitable for **web applications** (e.g. JavaScript)
 - Based on XML-RPC
 - Hub discovered at fixed port 21012
 - Special measures for safe sandbox evasion
 - Callable clients use long pull
- Profile interoperability:
 - ▷ Each client uses one appropriate profile
 - ▷ The hub can accept connections using multiple profiles
 - ▷ Clients are treated the same regardless of profile

Layer 3: MTypes

MTypes (message types) define message semantics

- An MType is:
 - ▷ A short hierarchical string (a.b.c)
 - ▷ . . . with associated input parameters
 - ▷ . . . and associated return type
 - ▷ . . . and associated semantics
- Think of it like a function call definition in an API
- Example:

table.load.votable: Loads a table in VOTable format

Arguments:

`url` (*string*): URL of table to load

`table-id` (*string*): Identifier for use with subsequent messages (*optional*)

`name` (*string*): Name to label loaded table for user (*optional*)

Return values:

None

- Other examples:
 - ▷ `table.load.fits`, `table.highlight.row`, `image.load.fits`,
`coord.pointAt.sky`, `samp.hub.event.register`, `samp.app.ping`
 - ▷ More at <http://wiki.ivoa.net/twiki/bin/view/IVOA/SampMTypes>
(add your own!)

Other Details

Things I haven't mentioned

- Subscription wildcarding
- Extensible parameter model
- Parameter data model
- Message delivery patterns (call/notify)
- Message targets (broadcast/send)
- Asynchronous processing model
- Error processing
- Client tracking

Hub Availability

Hub Implementations:

- JSAMP (Java)
- SAMPy (Python)
- ... some others, but implementations partial

How do I make sure a hub is running?

- Runs within some applications
 - ▷ Tools which include hub capability often run one on startup, if not already running (Aladin, TOPCAT, Iris, ...)
- Start one externally as an application (download and run JSAMP/SAMPy)
- Start one using WebStart (JSAMP) — e.g.
<http://astrojs.github.com/sampjs/hub/webhub.jnlp>

Rule of thumb: *If you're using a hub-capable toolkit, try starting a hub on startup if none is already running. Otherwise, don't worry — probably someone else (another application or the user) will start one. You do **not** need to implement a hub to be a SAMP citizen.*

JSAMP

JSAMP Java Toolkit/Library

- Contains:
 - ▷ Hub implementation
 - ▷ Client library
 - ▷ Diagnostic tools
- Availability:
 - ▷ Java 1.4+ (may move to 1.5)
 - ▷ One jar file (750 Kb), no external dependencies
 - ▷ Open source, unrestrictive licence (Academic Free/BSD)

<http://software.astrogrid.org/doc/jsamp/>

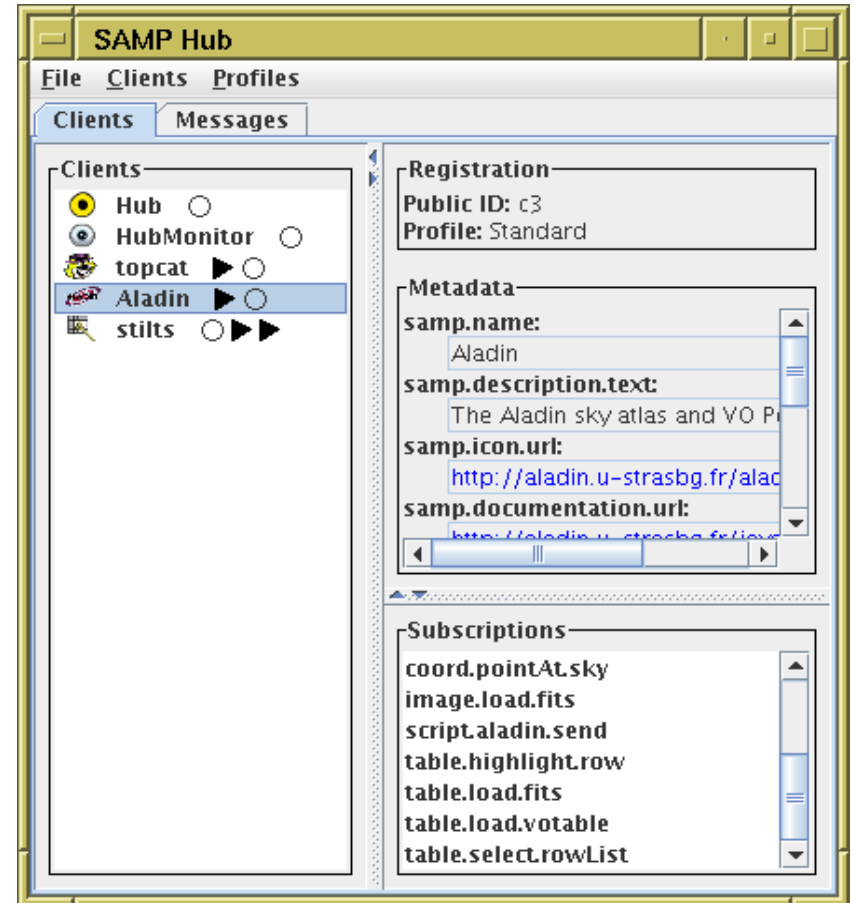
JSAMP GUI

JSAMP hub status GUI shows:

- Which clients are registered
- Metadata for each client
- MType subscriptions for each client (what messages they receive)
- All messages sent/received with content and responses

Availability:

- Optionally displayed by hub
- Optionally view from client using JSAMP lib (only messages to/from that client shown)
- Standalone command-line `hubmonitor` tool (only messages to/from `hubmonitor` shown)



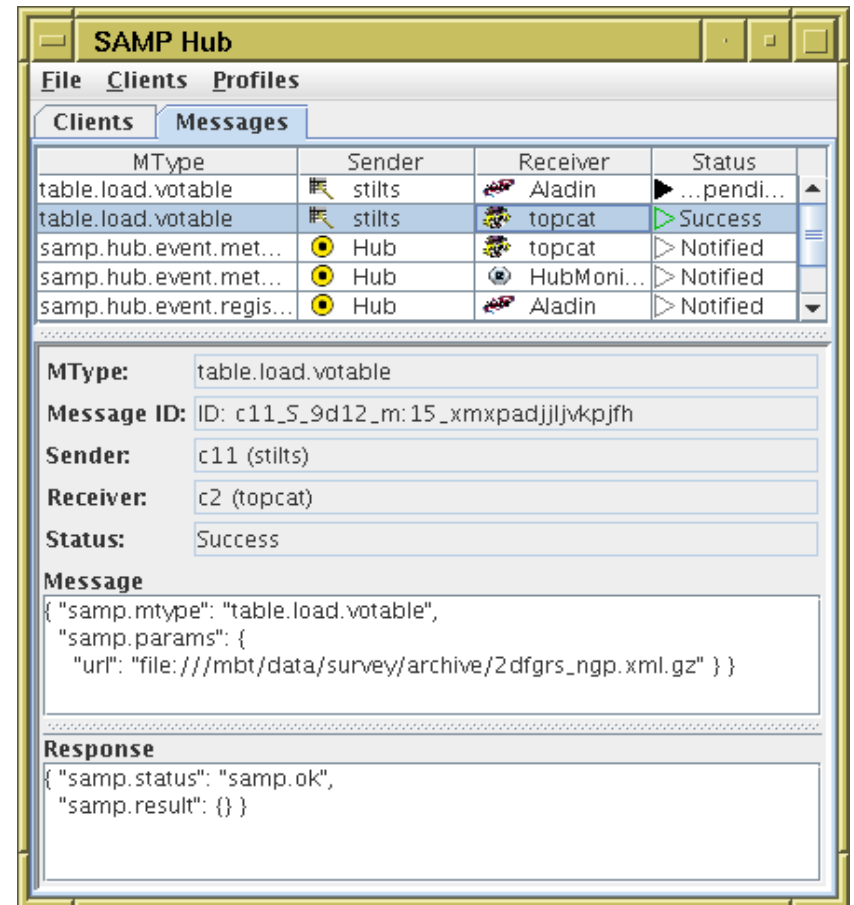
JSAMP GUI

JSAMP hub status GUI shows:

- Which clients are registered
- Metadata for each client
- MType subscriptions for each client (what messages they receive)
- All messages sent/received with content and responses

Availability:

- Optionally displayed by hub
- Optionally view from client using JSAMP lib (only messages to/from that client shown)
- Standalone command-line `hubmonitor` tool (only messages to/from `hubmonitor` shown)



The screenshot shows the JSAMP Hub GUI with a table of messages and a detailed view of a selected message.

MType	Sender	Receiver	Status
table.load.votable	stilts	Aladin	...pendi...
table.load.votable	stilts	topcat	Success
samp.hub.event.met...	Hub	topcat	Notified
samp.hub.event.met...	Hub	HubMoni...	Notified
samp.hub.event.regis...	Hub	Aladin	Notified

MType: table.load.votable
Message ID: ID: c11_S_9d12_m:15_xmypadjlljvkpjfh
Sender: c11 (stilts)
Receiver: c2 (topcat)
Status: Success

Message

```
{ "samp.mtype": "table.load.votable",  
  "samp.params": {  
    "url": "file:///mbt/data/survey/archive/2dfgrs_ngp.xml.gz" } }
```

Response

```
{ "samp.status": "samp.ok",  
  "samp.result": {} }
```

JSAMP Logging

Log SAMP communications at HTTP, XML or RPC level

- Standard profile (desktop applications):
 - ▷ Use java system property `-Djsamp.xmlrpc.impl=xml-log|rpc-log`
 - ▷ Set it on the hub to see all communications
 - ▷ Set it on any JSAMP client to see only communications to/from that client (no application code changes required to switch logging on/off)
- Web profile:
 - ▷ Hub flag `-web:log http|xml|rpc`
 - ▷ Can log full HTTP communications including headers etc

Logging can be verbose, but it's extremely useful to see exactly what HTTP/XML/RPC is being exchanged to diagnose problems.

Other JSAMP Capabilities

Command-line tools:

- `messagesender`: command-line send tool
- `snooper`: subscribes to some/all MTypes and logs messages
- `hubtester`: hub test suite
- `calcstorm`: hub stress tester

Non-standard profile support

- Run multiple desktop hubs at once
- Set fixed hub XML-RPC endpoint URL
- Implement custom/experimental profiles
- Tweak/relax web profile authorization policy

Multi-host support

- Hub flag `-std:httplock`: use HTTP URL not local filename as lockfile
- `bridge`: join two hubs (maybe on different hosts) together

JSAMP Client Library

- Basic client use:

- **HubConnection** object provides all hub methods

- ▷ `HubConnection c = profile.register(); do SAMP stuff; c.unregister();`
- ▷ Suitable for short-lived or send-only clients

- **HubConnector** creates HubConnections as required

- ▷ Watches for hubs starting and stopping
- ▷ Manages registration, metadata and subscriptions across hub reconnections
- ▷ Keeps track of other clients (live id→Client map)
- ▷ Suitable for long-lived, GUI-based, send/receive clients

- GUI features:

- Registered client icon panel
- Subscribed client send menus
- Hub view with client and message status display
- Hub start/reg/unreg methods and Actions
- MType-specific send menus



JSAMP Example 1: Send table to all subscribed clients (**HubConnection**)

```
public static void main(String[] args) throws SampException {  
  
    // Prepare message to send.  
    Map params = new HashMap();  
    params.put("url", args[0]);  
    params.put("name", "Command-line");  
    Message msg = new Message("table.load.votable", params);  
  
    // Register with hub.  
    HubConnection conn = DefaultClientProfile.getProfile().register();  
  
    // Send message (send-and-forget to all).  
    conn.notifyAll(msg);  
  
    // Unregister.  
    conn.unregister();  
}
```

JSAMP Example 2: Send table to single subscribed client

```
public static void main(String[] args) throws SampException {

    // Prepare message to send.
    Map params = new HashMap();
    params.put("url", args[0]);
    params.put("name", "Command-line");
    Message msg = new Message("table.load.votable", params);

    // Register with hub.
    HubConnection conn = DefaultClientProfile.getProfile().register();

    // Declare application metadata.
    Map meta = new HashMap();
    meta.put(Metadata.NAME_KEY, "Sender");
    meta.put("author.name", "Mark");
    conn.declareMetadata(meta);

    // Locate the first client that can load VOTables.
    Map tableClients = conn.getSubscribedClients("table.load.votable");
    String id1 = tableClients.keySet().iterator().next().toString();
    String name1 = (String) conn.getMetadata(id1).get(Metadata.NAME_KEY);

    // Send message (call and wait for response to a single client).
    System.out.println("Send to: " + name1);
    Response reply = conn.callAndWait(id1, msg, 5);
    System.out.println(reply.isOK() ? "... OK"
                               : ("... failed: " + reply.getErrInfo().getUsertxt()));

    // Unregister.
    conn.unregister();
}
```

JSAMP Example 3: Send and receive messages (HubConnector)

```
public static void main( String[] args ) {
    final HubConnector connector = new HubConnector(DefaultClientProfile.getProfile());

    // Post a button which will broadcast a Ping message.
    postButton(new AbstractAction("Ping") {
        public void actionPerformed(ActionEvent evt) {
            try {
                connector.getConnection().notifyAll(new Message("bof.ping"));
            } catch (SampException e) { e.printStackTrace(); }
        }
    } );

    // Respond to a Ping with a Pong; respond to a Pong by doing nothing.
    connector.addMessageHandler(new AbstractMessageHandler("bof.ping") {
        public Map processCall(HubConnection conn, String senderId, Message msg) throws SampException {
            conn.notify(senderId, new Message("bof.pong"));
            return null;
        }
    } );

    connector.addMessageHandler(new AbstractMessageHandler("bof.pong") {
        public Map processCall(HubConnection conn, String senderId, Message msg) {
            return null;
        }
    } );

    // Prepare connector with subscriptions and metadata, and set it running.
    Metadata meta = new Metadata();
    meta.setName("PingPong");
    meta.setDescriptionText("Sends and receives ping messages");
    connector.declareMetadata(meta);
    connector.declareSubscriptions(connector.computeSubscriptions());
    connector.setAutoconnect(5);
}
```

sampjs

JavaScript SAMP library

- 1000 lines of JavaScript
- No dependencies, but optionally comes with Flash machinery for old browsers
- Initially written as proof of concept, not intended for release
- But got used; seems to work
- Listed at <http://astrojs.org/>
- Source and docs on GitHub <http://github.com/astrojs/sampjs/>
- Documentation includes live examples (SAMP-enabled web pages)
- Contributions encouraged

sampjs Example 1: Send a table

```
<html>
<head><title>Send Table</title></head>
<body>
<script src="samp.js"></script>
<script>
  // Broadcasts a table given a hub connection.
  var send = function(connection) {
    var msg = new samp.Message("table.load.votable",
                              {"url": "file:///mbt/data/table/messier.xml"});
    connection.notifyAll([msg]);
  };

  // Adjusts page content depending on whether the hub exists or not.
  var configureSampEnabled = function(isHubRunning) {
    document.getElementById("sendButt").hidden = !isHubRunning;
  };

  // Arrange for document to be adjusted for presence of hub every 2 sec.
  var connector = new samp.Connector("Sender");
  onload = function() {
    connector.onHubAvailability(configureSampEnabled, 2000);
  };
  onunload = function() {
    connector.unregister();
  };
</script>

<p><b>I have a table.</b></p>
<button id="sendButt" type="button" onclick="connector.runWithConnection(send)">Send It!</button>
</p>

</body>
</html>
```

sampjs Example 2: Steer (e.g.) Aladin from a web page

```
<html>
<body>
  <script src="samp.js"></script>
  <script>

    // Set up hub registration/unregistration.
    var meta = { "samp.name": "SkyNavigator" };
    var connector = new samp.Connector("SkyNavigator", meta);
    onload = function() { document.getElementById("regPanel").appendChild(connector.createRegButtons()); };
    onunload = function() { connector.unregister(); };

    // Action to send message when sliders change value.
    var posChange = function() {
      var ra = document.getElementById("RA").value;
      var dec = document.getElementById("Dec").value;
      document.getElementById("pos").innerHTML = ra + ", " + dec;
      var message = new samp.Message("coord.pointAt.sky", {"ra": ra, "dec": dec});
      connector.connection.notifyAll([message]);
    };
  </script>

  // Page content.
  <div id="regPanel"></div>
  <div>RA: <input id="RA" type="range" onchange="posChange()" min="0" max="360" step="0.25" /></div>
  <div>Dec: <input id="Dec" type="range" onchange="posChange()" min="-90" max="90" step="0.25" /></div>
  <div>Pos: <span id="pos"></span></div>
</body>
</html>
```

Resources

SAMP info Page: <http://www.ivoa.net/samp/>

SAMP Standard: <http://www.ivoa.net/Documents/latest/SAMP.html>

Mailing list: apps-samp@ivoa.net

JSAMP: <http://software.astrogrid.org/doc/jsamp/>

sampjs: <http://github.com/astrojs/sampjs/samp.js>